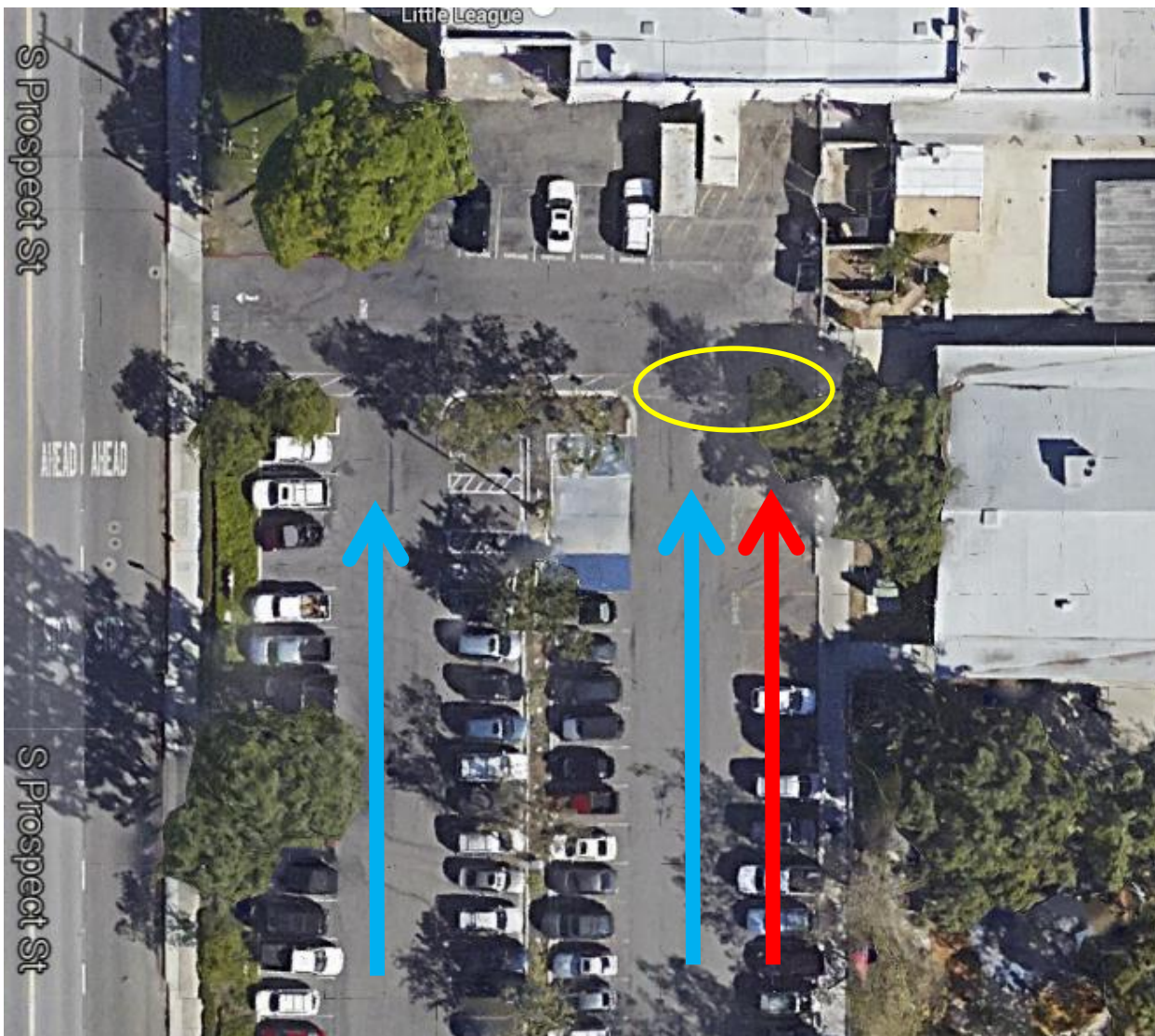


Parents,

Please review the information below regarding parking lot safety. Mr. Erven will be meeting with all students on November 12<sup>th</sup> to review these important procedures and we would like your support to teach our students to be responsible in the parking lots.

### **Prospect Parking Lot**

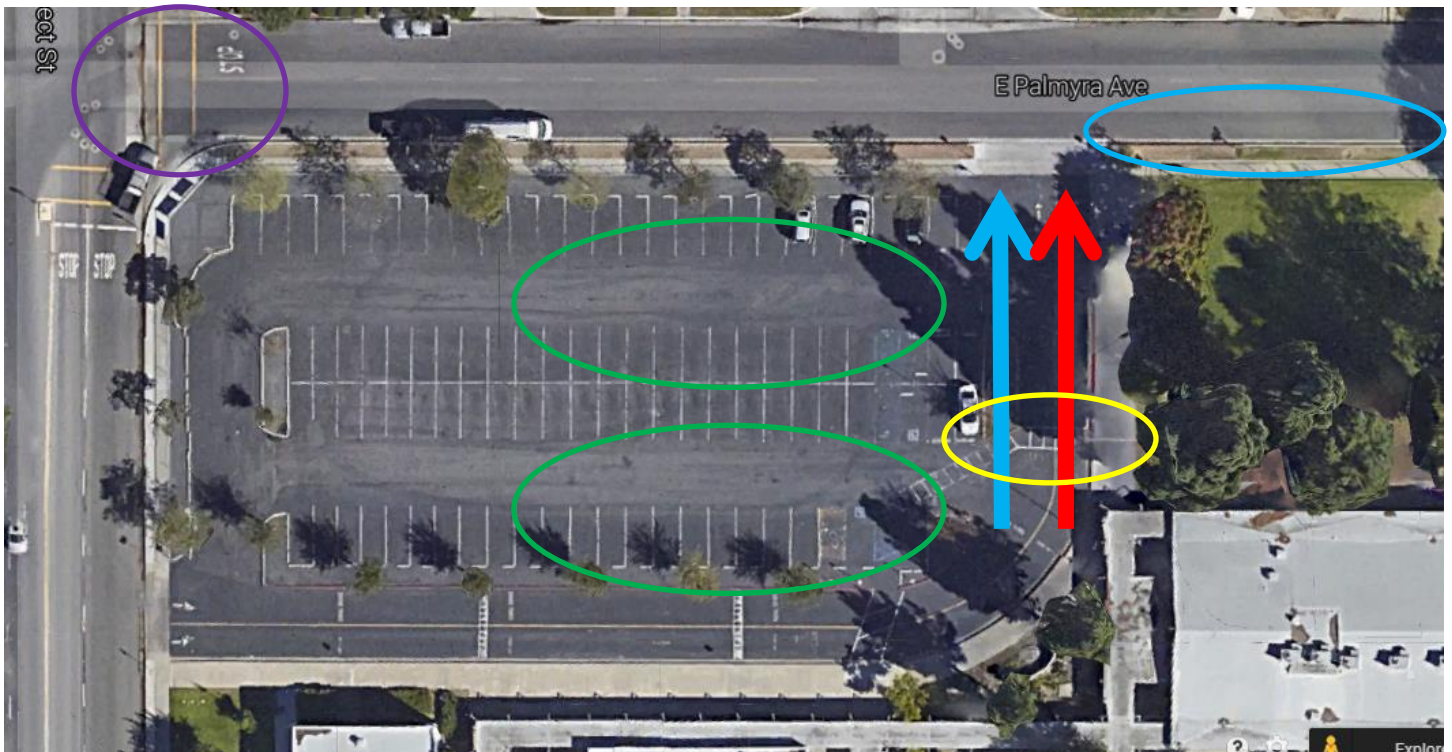
Please make sure to drop off and pick up in the loading zone ONLY (marked with a red arrow below). Students should **never** cross in between cars to go into the drive through lanes (in blue below) and we advise **everyone** to use the circled crosswalk to get to your parked vehicles (this will make exiting in the afternoon much faster as well). All lanes are one direction in the Prospect Parking Lot.



## Prospect/Palmyra Lot:

Please make sure to drop off and pick up in the loading zone ONLY (marked with a red arrow below). Students should **never** cross in between cars to go into the drive through lanes (in blue below) and we advise **everyone** to use the circled crosswalk to get to your parked vehicles (this will make exiting in the afternoon much faster as well). All lanes are one direction in the Prospect/Palmyra Parking Lot. Students and parents should NEVER jaywalk and must utilize the crosswalk to cross across Palmyra (circled in purple). Also, please be sure to keep the bus lanes on Palmyra clear (circled in blue).

Also, as you wait for students, please make sure to park in a space and not block the lanes in the parking lot (circled in green). When parents block these lanes, cars are unable to exit the parking spaces and this causes traffic congestion.



Please let the office know if you have any questions and Administration will be out and about to ensure that everyone is following traffic guidelines. Thank you for your cooperation.